

Protecta EX Mortar - Plasterboard Wall Metal Pipe Combustible Insulation

System/FPA Register ID# FC163

| | |
|---------------------|-------------------------------------------------------------------------------------------------|
| Products | Protecta EX Mortar Protecta FR Pipe Wrap 50mm |
| Application | Fire stopping of combustible insulated pipes in p'bd walls. |
| Construction | Minimum wall thickness of 100mm comprising timber or steel studs with 2 layers 13mm fire board. |

Fire & Sound classification

Steel pipes ≤ Ø165mm with 13 - 32mm continuous Elastomeric foam insulation and 2 layers of 50mm wide pipe wrap fitted to both faces
 FRR -/120/60

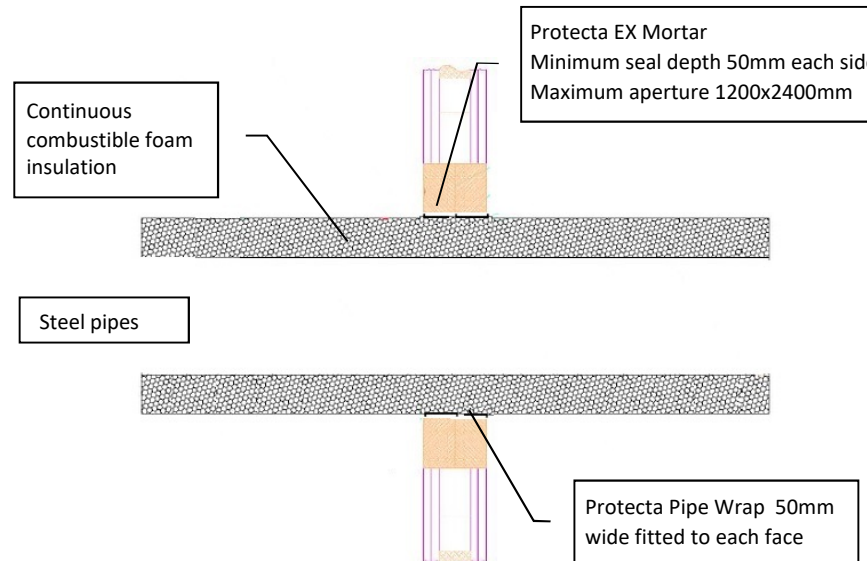
Copper pipes ≤ Ø54mm with 9 - 25mm continuous Elastomeric foam insulation and 2 layers of 50mm wide pipe wrap fitted to both faces
 FRR -/120/120

Alupex pipes ≤ Ø75mm with 9 - 25mm continuous Elastomeric foam insulation and 2 layers of 50mm wide pipe wrap fitted to both faces
 FRR -/120/120

Sound reduction (seal only) STC 64

Installation Instructions

1. Ensure the faces of the aperture opening are free of dust and any other contaminants. The faces may be moistened for better adhesion.
2. Pour clean water into a suitable mixing vessel and pour enough mortar to obtain the required consistency. Mix well to avoid lumps. Always add the mortar to the water, do not reverse this mixing process.
3. Once the desired consistency is achieved pour or trowel the mortar onto the shutter board making sure that it flows into all corners and around services. Apply a firm pressure to the mortar to eliminate any trapped air bubbles. Build up to the required depth.



Minimum separations and limitations

An aperture can include several services, and they may also be different. Services within the system Protecta® FR Board seal do not require a minimum separation, except pipes where pipe insulation penetrates the seal and plastic pipe penetrations which should be a minimum of 30 mm from other services in the aperture. Services should be a minimum of 25mm from seal edges. The total amount of cross sections of services (including insulation) should not exceed 60% of the penetration area. The minimum permitted separation between adjacent apertures is 200mm.

As a part of our policy of on-going product development and testing, we reserve the right to modify, alter or change product specifications without giving notice. All information contained in this document is given in good faith and is provided for guidance only. Any drawings provided are for illustrative purposes only. As Polyseam has no control over the methods or competence of installation and of prevailing site conditions, no warranties, expressed or implied, is intended to be given as to the actual performance of the product mentioned or referred to herein and no liability whatsoever will be accepted for any loss, damage or injury arising from the use of the information given.

For all technical details on the products specified please refer to the technical data sheets that can be found on www.firestopcentre.co.nz

Signed and approved:



Protecta®

Polyseam Ltd, 15 St Andrews Road,
 Huddersfield, West Yorkshire, HD1 6SB
 Email: post.uk@polyseam.com

| | |
|--------------------------|-----------------------------|
| Sheet size: A4 | Drawn date & no: 23/5/21 |
| | Drawn by: K.B |